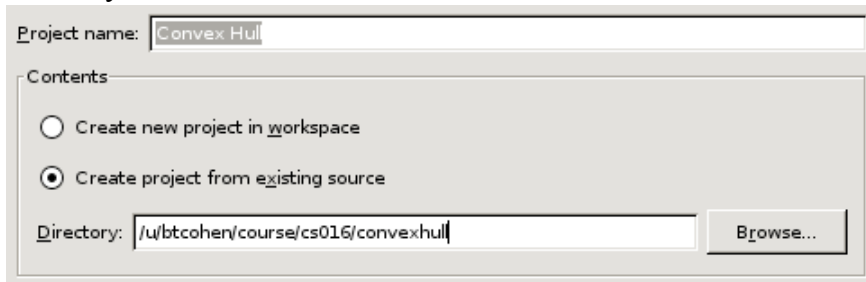


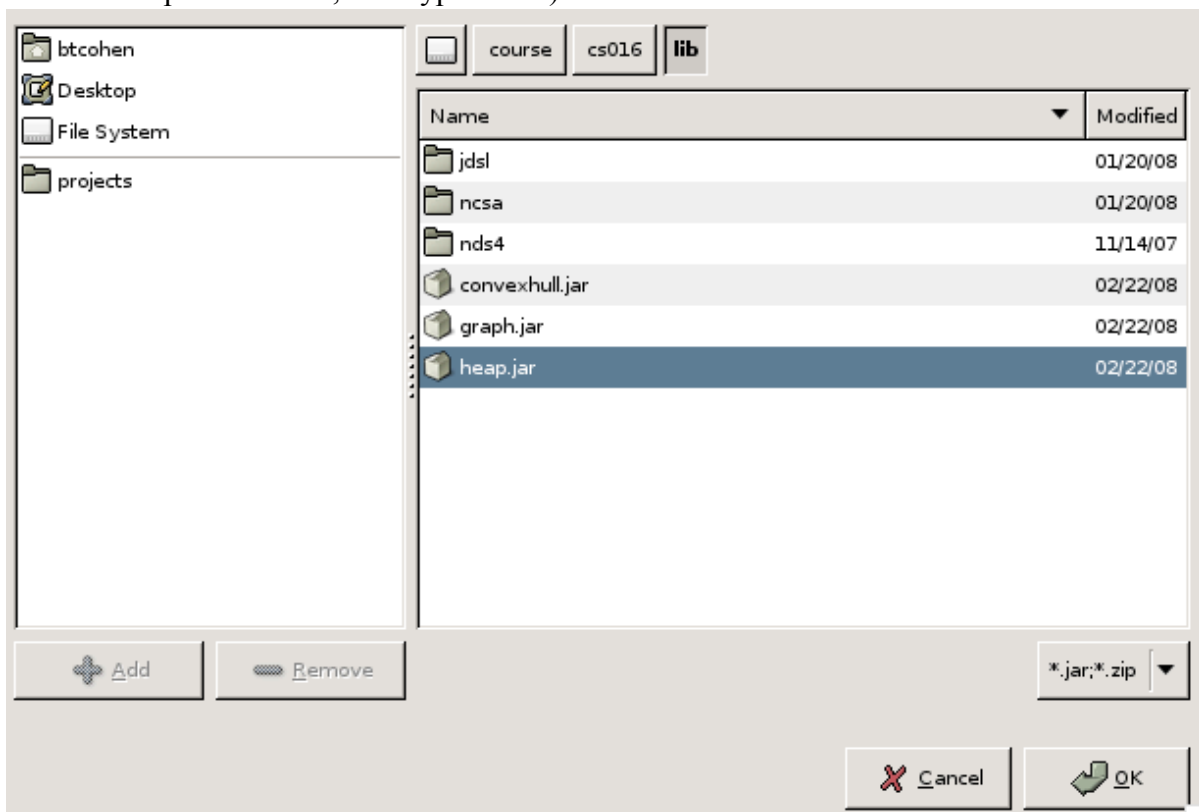
How To Use Eclipse With Convex Hull:

Getting Started:

1. Install Heap using cs016_install convexhull.
2. Open Eclipse and create a new project. (File -> New -> Project)
3. Select “Java Project” and click Next.
4. Give your project a name (probably “Convex Hull”)
5. Select “Create Project From Existing Source” and select the convexhull folder in your cs016 directory.



6. Click Next.
7. Click on the Libraries tab and the select “Add External Jar”.
8. Locate convexhull.jar in the /course/cs016/lib directory and nds4.jar in /course/cs016/lib/nds4 and add them (If cs016 doesn't appear in the course directory, right click the window and select Open Location, then type cs016) :

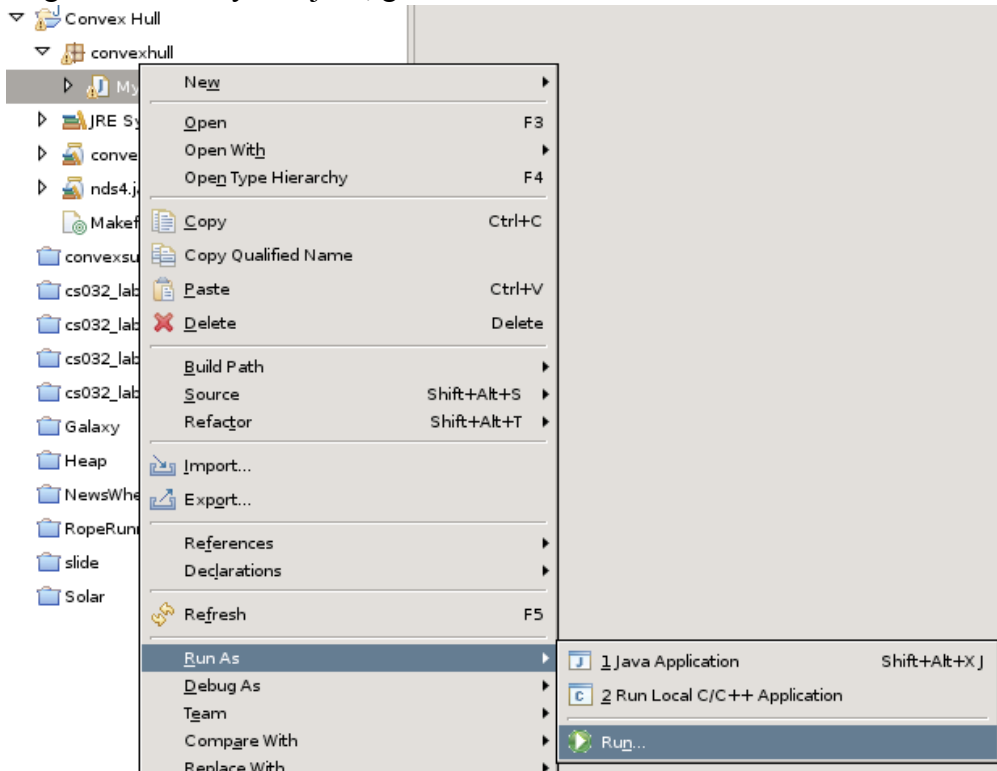


9. Click Finish.

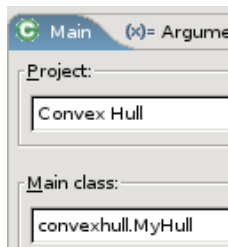
10. Create a new package in your project named “convexhull”.
11. Move MyHull.java from “default package” to the convexhull package.

Running Convex Hull:

1. Right click on MyHull.java, go to “Run As” and Select “Run...”.



2. Double click on “Java Application” to create a new Run Configuration and name it Convex Hull.
3. “Project” should already say “Convex Hull”. If it doesn’t, click “Browse” and select it.
4. Fill in “Main Class” with “convexhull.MyHull”



5. Click Run. The Visualizer should now open. Enjoy!

If the Visualizer didn’t open, go see a TA on hours.