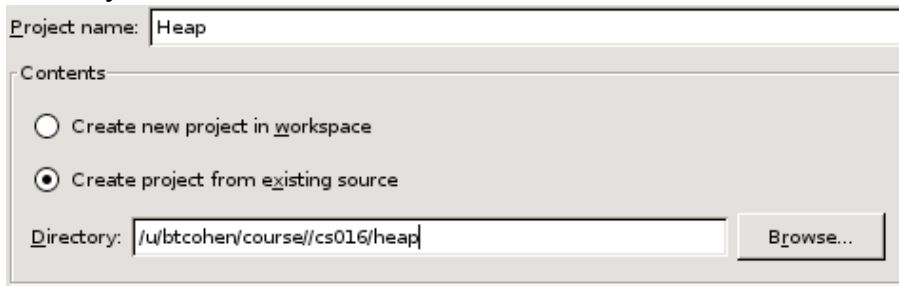
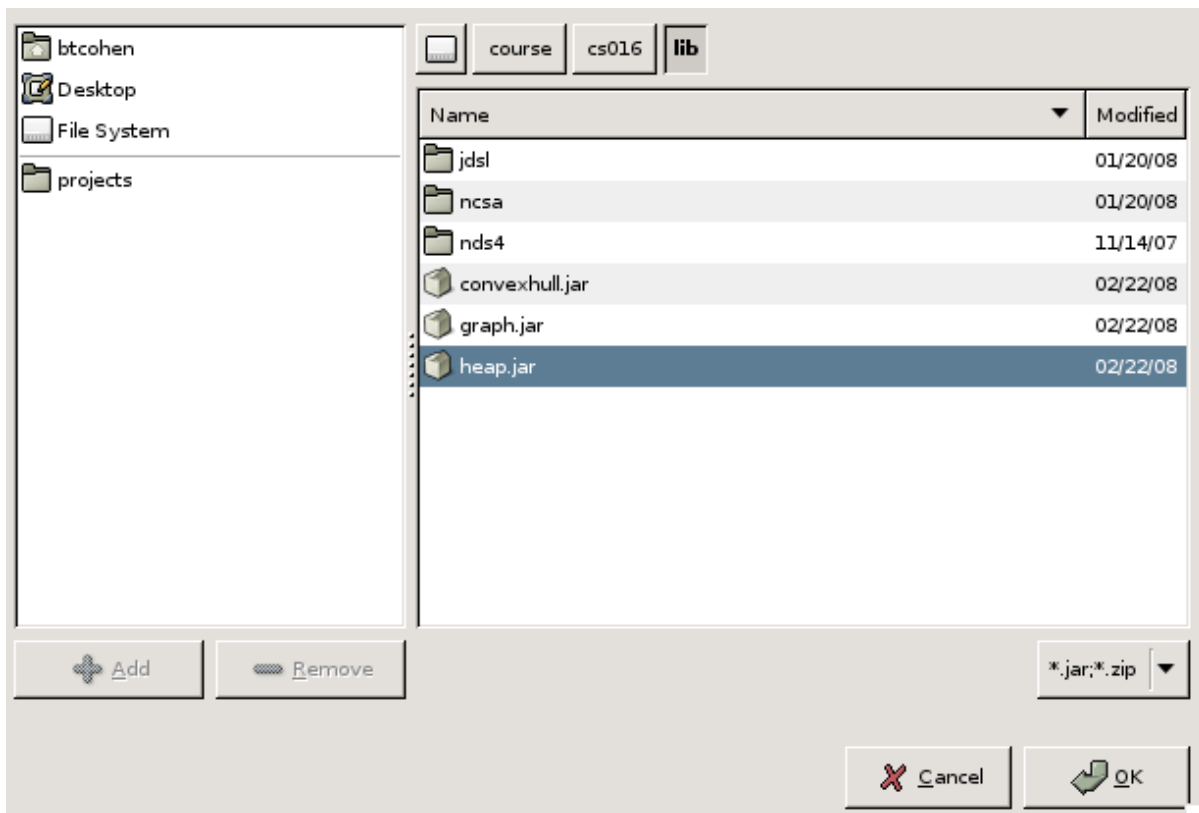


How To Use Eclipse With Heap:

1. Install Heap using cs016_install heap.
2. Open Eclipse and create a new project. (File -> New -> Project)
3. Select “Java Project” and click Next.
4. Give your project a name (probably “Heap”)
5. Select “Create Project From Existing Source” and select the heap folder in your cs016 directory.

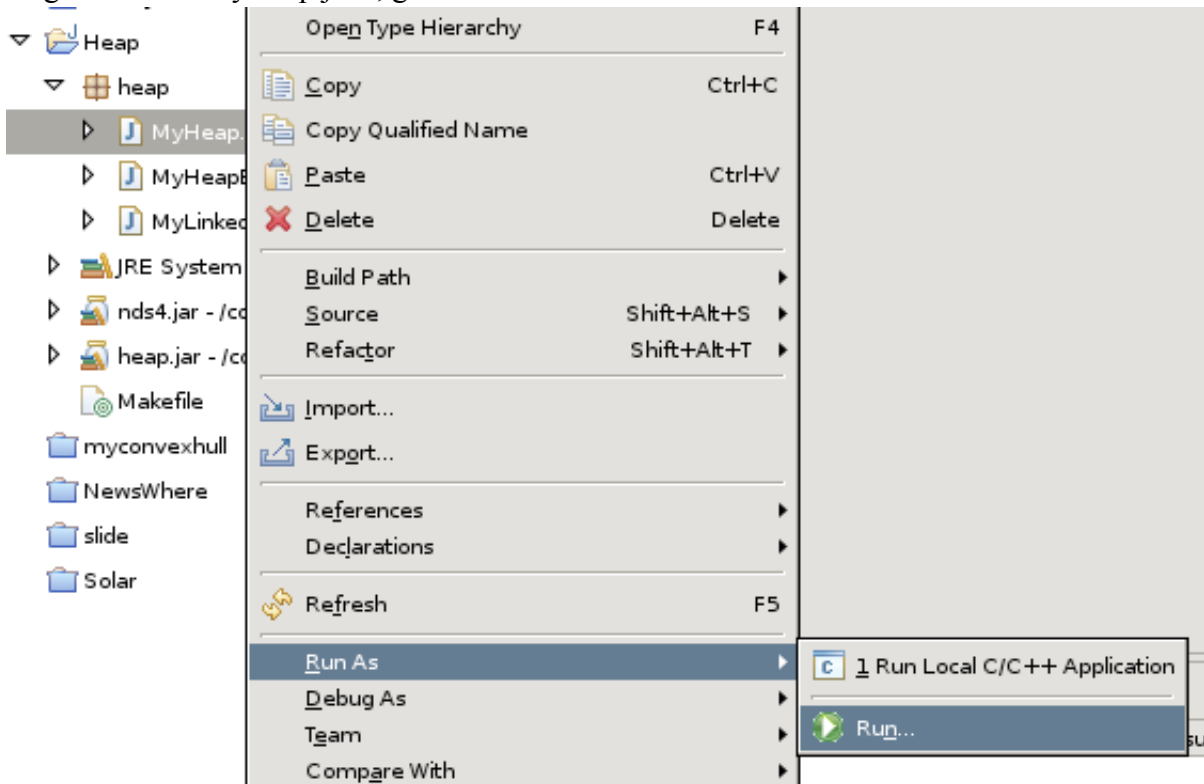


6. Click Next.
7. Click on the Libraries tab and the select “Add External Jar”.
8. Locate heap.jar in the /course/cs016/lib directory and nds4.jar in /course/cs016/lib/nds4 and add them :



9. Click Finish.
10. Create a new package in your project named “heap”.
11. Move all 3 java files from “default package” to the heap package.

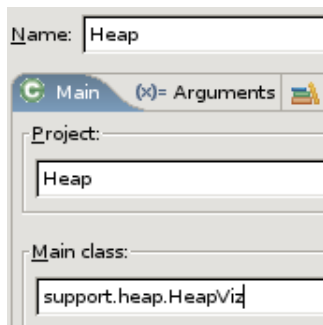
12. Right click on MyHeap.java, go to “Run As” and Select “Run...”.



13. Double click on “Java Application” to create a new Run Configuration and name it Heap.

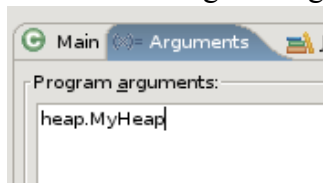
14. “Project” should already say “Heap”. If it doesn’t, click “Browse” and select it.

15. Fill in “Main Class” with “support.heap.HeapViz”



16. Click on the “Arguments” tab.

17. In the “Program Arguments” box type “heap.MyHeap”



18. Click Run. The Visualizer should now open. Enjoy!

If the Visualizer didn’t open, go see a TA on hours.